



DIPoH ESFRI application and support

Interim Assembly of Members- 25 June 2020

Name: Linda Abboud, Petronille Bogaert and Herman Van Oyen
Institution: Sciensano, Belgium
Contact: infact.coordination@sciensano.be



This project is funded by the
Health Programme of the
European Union

- Deadlines extended by EC till 9th of September 2020
- Draft ESFRI application in final stages
- Review from partners over the summer

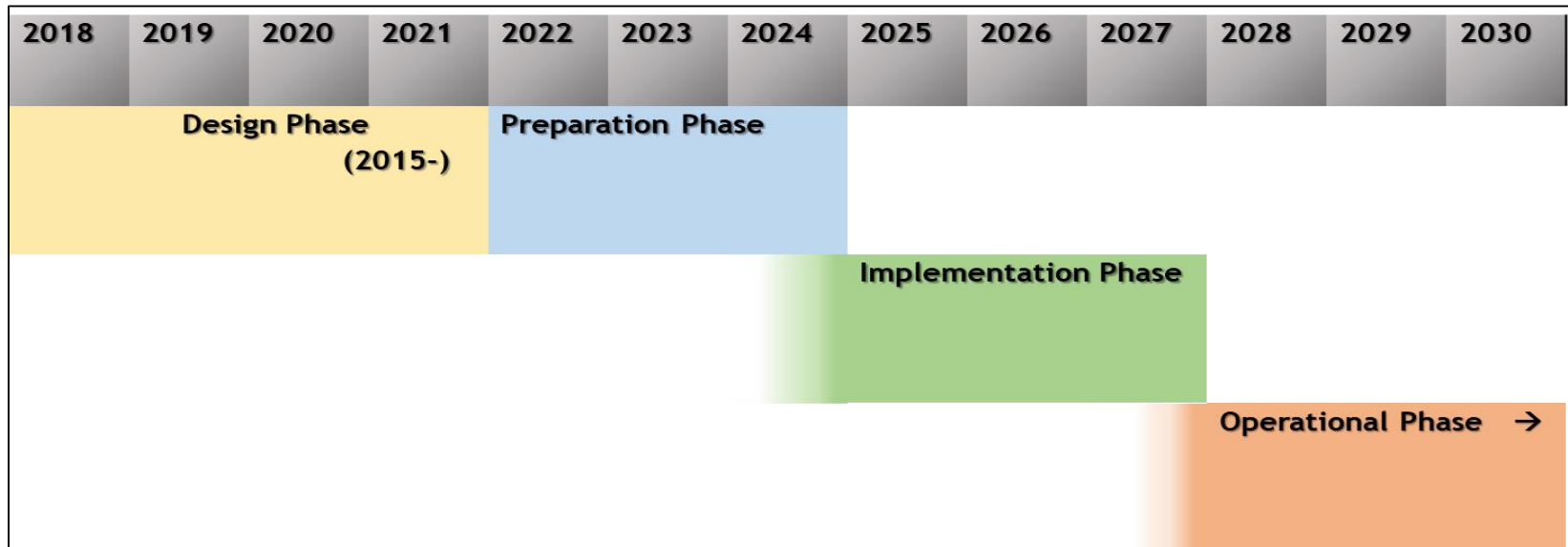
Ongoing work on DIPoH Business Case

- Mission and vision;
- Short-term and long-term sustainable strategy and user strategy;
- Development of the final management and governance structures;
- Identification of users and criteria for development of service definition;
- Analysis of the information needs of current health policies in MSs and the EU;
- Select and specify services;
- Cost estimation, including estimates for the tasks to be executed and personnel involved;
- Added value of DIPoH for its financers (MSs);
- Market analysis of DIPoH in the EU health information landscape.

DIPoH Governance and management models



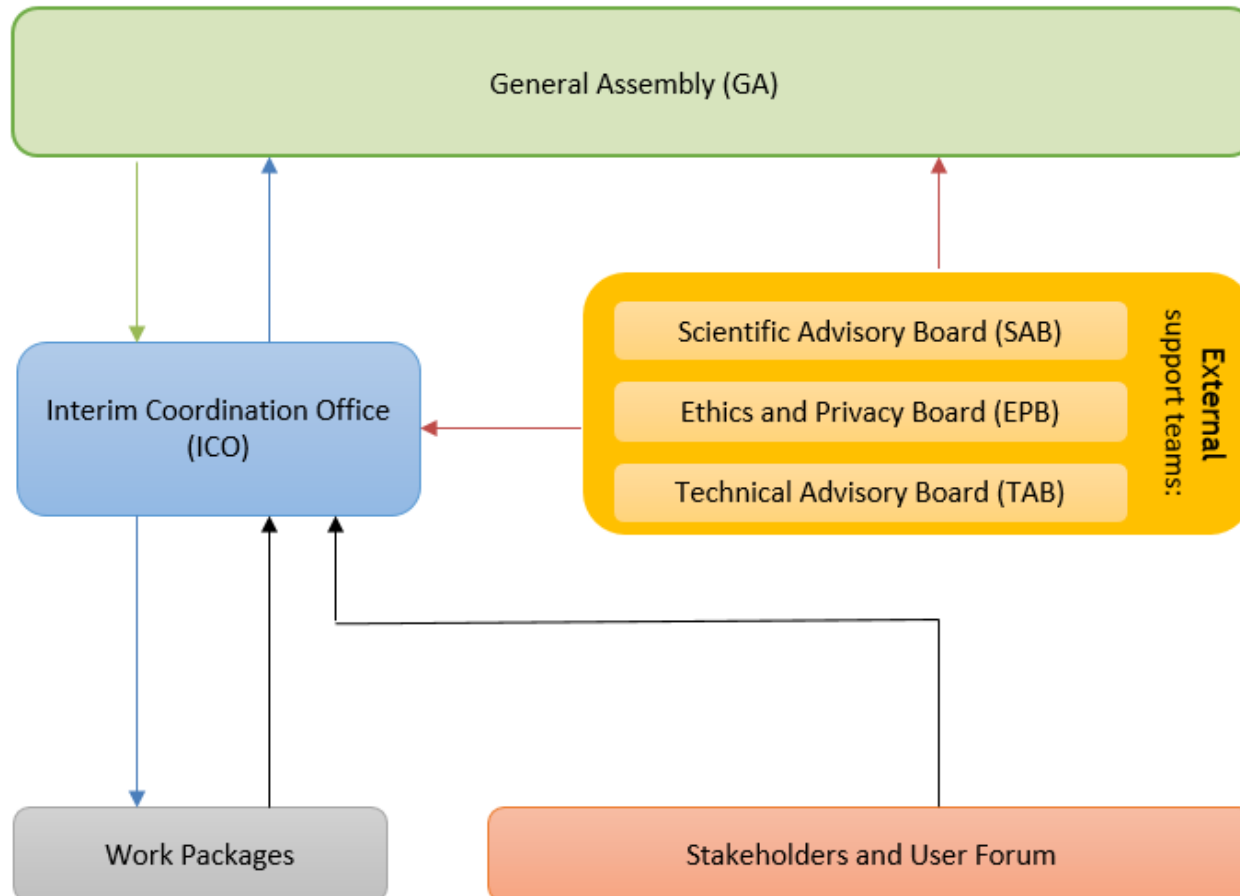
- I. Interim phase (preparatory and Implementation)
- II. Operational phase



I. Interim governance and management model

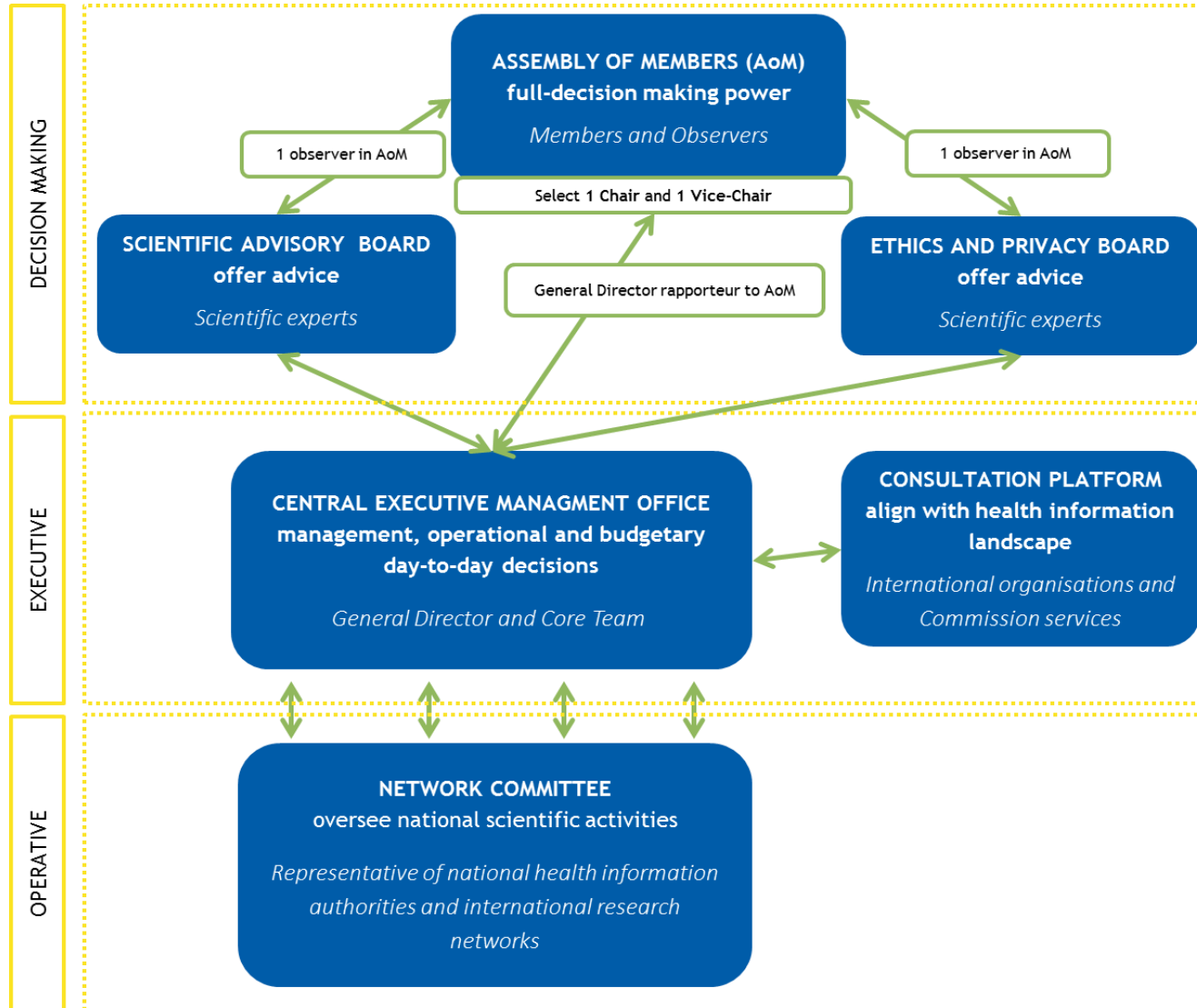
- The interim DIPoH governance and management model cover the **preparatory and implementation phases** of DIPoH, starting from the time of the inclusion of DIPoH on the ESFRI roadmap as an ESFRI project until the formation of the legal entity of the research infrastructure.
- The preparatory and implementation tasks and activities will be project based.
- The interim governance bodies are responsible for further refining processes, statutes and participation for the operational phase of DIPoH.

DIPoH interim governance bodies



	DIPoH interim phases	DIPoH operational entity
Ultimate decision-making body	The General Assembly	The Assembly of Members
Central office- executive body	The Interim Coordination Office	The Central Executive Management Office
	Project Coordinator	General Director
	Support team	Core team
External support bodies	Scientific Advisory Board	Scientific Advisory Board
	Ethics and Privacy Board	Ethics and Privacy Board
	Technical Advisory Board	
Stakeholders body	Stakeholder and user forum	Consultation platform
Internal support bodies	The General Assembly	Network Committee

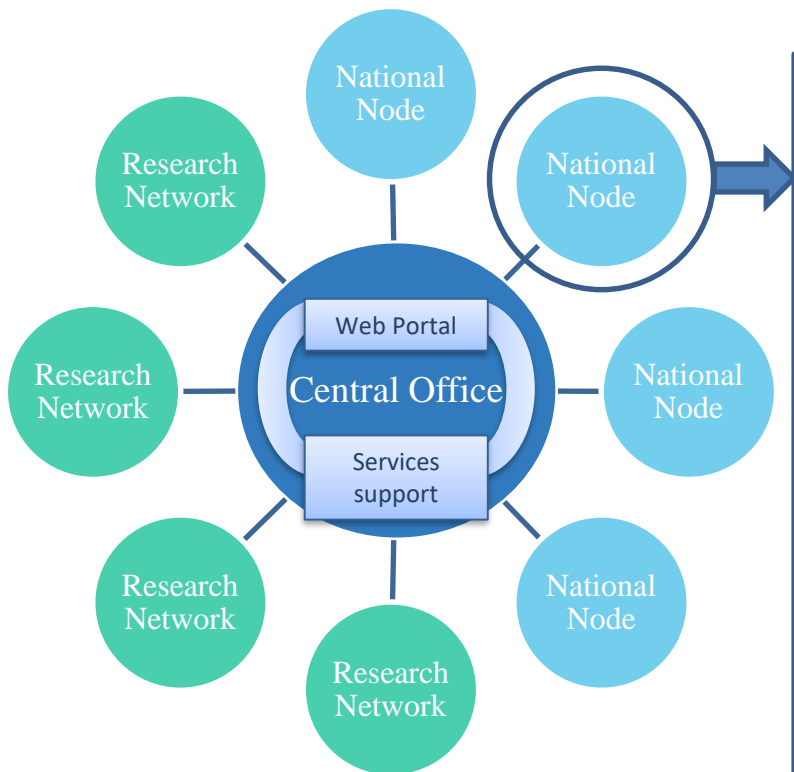
II. Operational governance and management model



DIPoH Operational elements



DIPoH Operational elements: National Nodes(NN)



- Functions as an organisational entity that liaises between the RI, the country and its Specific Research Networks and national health information stakeholders.
- Oversees and supports the cohesion of the national health information system
 - by connecting with relevant national actors;
 - by exchanging national expertise at international level;
 - connect to ministries of health and research

Bringing together the regional/national health information stakeholders to:

- Share expertise on regional/national level
- Share ongoing activities on regional/national level
- Update on initiatives, meetings and expert groups at EU level
- Provide overview of national data sources through web based platform
- Provide coordinated overview of national and international health information related initiatives and activities

National Nodes in the framework of InfAct

- 19 countries have reported their progress and update regularly (2019-2020)
- 12 countries already have an existing format that bring together important HI stakeholders
- 7 countries initiated first meetings in the framework of InfAct
- In many countries, coordinating organization is National Public Health Institute (also part of InfAct)

Map by: <http://philarcher.org/diary/2013/euomap/>

- InfAct will continue supporting the set up of NN in partner countries
- Large interest from EC to build further on the NN in addition to DIPoH

DIPoH Cost estimation



- Being developed in accordance to ESFRI guidelines
- Divided into investment costs (considered during the interim phases) and (yearly) operational costs
- Costs estimations for general functioning and service development of Central Office and DIPoH's Operational Elements (NN+RN).
 - Human resources, travel and other costs (assets, utilities, etc)
- Cost estimation for the technical resources for the set up of a distributed infrastructure
 - To enable semantic and technological interoperability across NN and RN (as data hubs), with the Central Office

- Contributions will depend on:
 - The actual costs of the services and functions and
 - The de facto net revenues of DIPoH's services
- Depends on the final structure of committed partners and types of memberships (individual, network, organizations)
 - Will be decided during the preparatory and implementation phases of DIPoH
- Comes into effect once DIPoH's legal entity has been established and DIPoH is operational.

As a distributed infrastructure, DIPoH will have a mixed funding model with the following contributions:

1. DIPoH collectively competes for grant funding from the EU under Horizon 2020 and Horizon Europe.
2. The Central Office is funded through membership fees paid by Member countries.
3. Fee for services paid by DIPoH users.
4. National Nodes are typically funded through national-level investments, supporting national coordination, the development and operation of services. International research funding also possible.
5. Research Networks are funded through national-level investments and international funding.

DIPoH support



- **Expression of political support (EoS)**- by the lead country and at least two additional MS or associated countries signed by the national ministries responsible for RI
- **Expression of Financial Commitment (EoC)**- mainly by the lead country and additional prospective member countries to financially contribute to the preparation and implementation phases by an authority(legal entity) from the lead country
- **Inter-institutional and multi-lateral agreement**- signed by the core partners formally involved in the DIPoH consortium.
 - Can be any individual or group of national organization/institute
 - No political support needed

Expression of political Support (EoS)



Map by: <http://philarcher.org/diary/2013/euomap/>

Received:

- Belgium
- The Netherlands
- Portugal
- Finland
- Romania
- Croatia

Pending:

- 6 countries

- Expression of financial Commitment (EoC):
from leading country for coordination
Belgium: Sciensano and RIZIV
- Letter of collaboration from Research Networks:
EuroPeristat, EuroSafe, ECHO

Example EoS



Subject: Letter for expression of political support (EoS) for the construction of the research infrastructure for population health information

Through this letter, we would like to express the interest of [name of country] to be involved in the process towards the construction and implementation of the research infrastructure on population health information.

The ministry of health/research recognizes the Distributed Infrastructure on Population Health, (DIPoH) as an important research infrastructure and encourages the participation of national institutes to the preparatory phase consortium, subject to further assessments and bilateral agreements.

This “Expression Of Political Support (EoS)” does not constitute, in any aspect, a decision on the financial contribution from the government of [name of country] to the construction of the research infrastructure.

The ministry recommends [lead institution in country] as coordinator, as our representing organization to the research infrastructure on population health information.

Subject: Expression of Commitment

[name of lead institution in the country] expresses its financial commitment towards the preparatory and construction phases of the research infrastructure on population health information as a pan-European research infrastructure.

[name of lead institution in the country] will participate in the development of this important research infrastructure through [in cash and/or in kind contribution], the size and manner of our financial contribution will be proportionate to the budgetary needs of the research infrastructure on population health information and our financial capacity.

It will be further calculated based on (i) modalities described in the consortium agreement signed by all participating organizations (ii) subsequent agreements of the board of the research infrastructure on population health information.

Inter-institutional Memorandum of Understanding

Country	Institute	Status
Austria	GÖG – Gesundheit Österreich GmbH (Health Austria)	Received
Belgium	Sciensano	Expected
Croatia	CIPH – Croatian National Institute of Public Health	Received
Finland	THL – National Institute for Health and Welfare of Finland	Expected
France	SPF – Santé publique France	Pending
Germany	RKI – Robert Koch Institute	Pending
Italy	ISS – Italian National Institute of Health	Expected
Portugal	IHMT – Institutes Of Hygiene And Tropical Medicine Ulisboa – University of Lisbon	Expected Expected
Slovenia	NIJZ – National Institute of Public Health	Expected
Spain	IACS – The Aragon Health Sciences Institute	Received

Upcoming meetings



1. PHIRI for COVID-19 meeting with InfAct partners- June 26th (13:00)
2. InfAct NN meeting, to update on NN status and discuss further work- June 26th (15:00)

→if you want to join, email
infact.coordination@Sciensano.be

3. Third AoM Meeting- October 27th (Madrid)



www.inf-act.eu
[@JA_InfAct](https://twitter.com/JA_InfAct)

